

# CLINICUBE \_



CLINICUBE

## **Financial District**

160 Broadway, Floor 16

New York, New York,

10038

## **Nomad**

39 W 29th St, Floor 11

New York, New York,

10001

# About \_

## Who are we?

The New Doctor's Office

---

*Clinicube is a concierge collaborative care environment. Co-working customized for the unique needs of the medical community. That means a better healthcare experience for both the patient and doctor. We have everything you need to run an efficient medical practice.*

*More than just medical office sublet space, Clinicube seeks to fill the operational void that exists in common shared office arrangements. Our unique "clinicube OS" is a comprehensive, fully managed, operating system for medical professionals. Enjoy world class management from physicians and business personnel with high touch customer service and brand building experience.*

**You treat your patients, we do the rest.**



**Simplify Private Practice**  
Startup and Operations

# Mission \_

*The business of medicine is hard. Private practice and medical office start up costs are high, reimbursements down, overhead and wages up, as is your malpractice cost. Often, there's lots of wasted or redundant space.*

***With Clinicube, having common resources allows one to concentrate their capital where it matters most.***



“New York City is one of the world’s most vibrant and exciting cities, but operating a business here comes at a great cost. Our new medical co-working space means that startups, solo practitioners, and even consolidated practices can operate in New York while keeping their expenses lower than if they were to go the traditional route,”

*- Noam Sadovnik, founder CLINICUBE.*

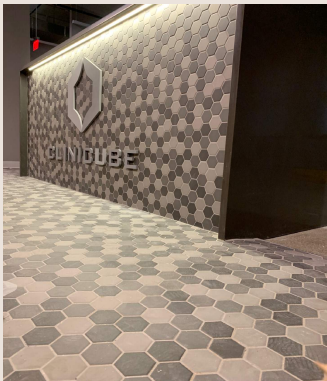
**FOCUSING**

**GROWTH**

01

02

# Introducing\_



---

## CLINICUBE NOMAD \_

Occupying a **full floor**-through loft space, our NOMAD medical office sublet space spans over **5,000 sq ft** with a modern, open and functional design will sure to impress. We offer an array of **full and part-time medical offices** and studio space for small and medium sized private practices.



---

## CLINICUBE FIDI \_

Clinicube Fidi, launching in 2019, spans **6,000 sq ft.**, also occupying a **full floor**, with soaring **18' foot ceilings**, both spaces enjoy **direct elevator access** right into our space. Enjoy a variety of common spaces- patient waiting rooms, conference table and wet bar.



# Benefits\_



## 24 Hour Access \_

---

A full offering of administration and management on offer, full-time reception staff 10-6, Monday through Friday included. Access your space unstaffed 24/7.



## Modern Open Design \_

---

A thoroughly modern space that integrates the latest technology with modern design sensibilities for a smart NYC office space that looks as exclusive as it does professional



## Private Phone Line and VM \_

---

A multi-line telephone solution connecting your office phone to your mobile devices, providing business telephone features on any of your common devices.



## Fast Internet \_

---

Offices equipped with a Fios gigabit fiber network, delivering blazing fast speeds with high reliability to meet your busy practices needs.



## Mail Service \_

---

Basic mail and package acceptance service by our front desk staff. Receive all your mail at our address.



## EHR and Billing Support \_

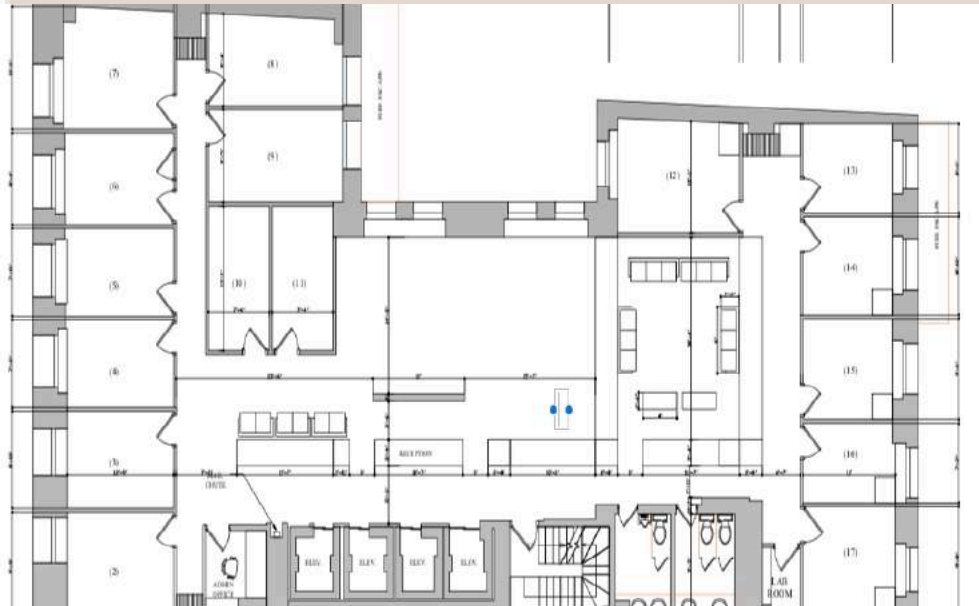
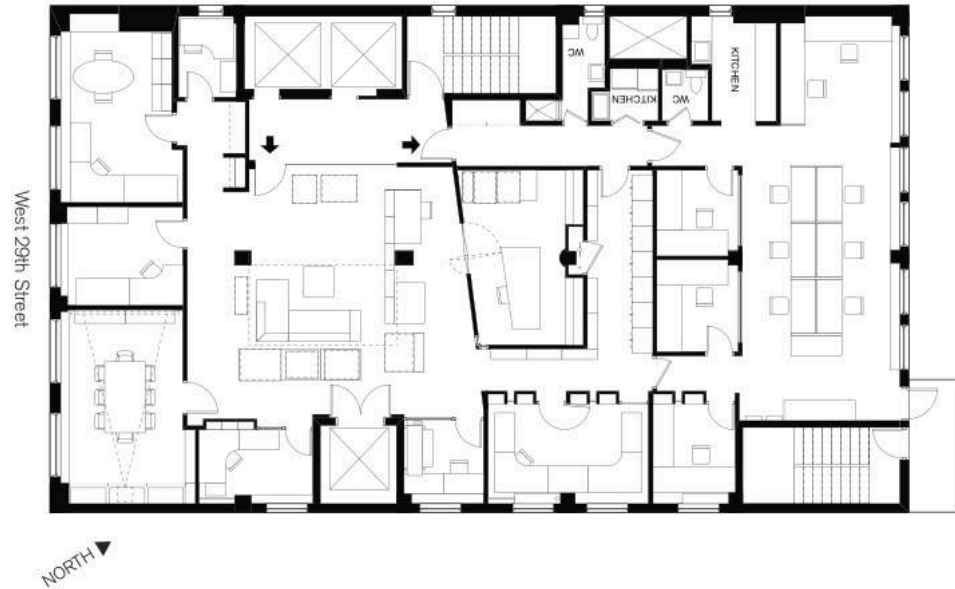
---

Have our front desk staff assist you with our in-house EHR system, DrChrono. A fully integrated electronic medical records, medical billing, RCM and practice management platform.

# Floor Plans\_

## NOMAD \_

- Full floor presence
- Direct Elevator Access
- 11' ceilings
- Dry bar
- Functional reception



## FIDI \_

- Full floor presence
- Direct Elevator Access
- 18' ceilings
- Wet bar
- Massive reception

# Pricing Plans -

## \*Base Rates

Dry Room..... **\$3,000**

Extra Large Executive.. **\$3,250**

Room w/ plumbing..... **\$3,500**

Studio space... varies **(from \$3,000/provider)**

\*Multi-room discounts

### Administrative Add-ons

Plus \_  
Choose 1

Lite \_  
Choose 2

Professional \_  
Choose 3

**Additional Staffing Support**  
*Early morning hours*



**Secondary Processing**

Scanning, EHR, Data Entry  
Management



**Revenue Cycle Management**  
Billing, Collections



**Additional Monthly Fee:**

**\$300**

**\$500**

**\$800**



**Please contact us for more information:**

**Email us at:**

[hello@clinicube.co](mailto:hello@clinicube.co)

**Or visit our website:**

[www.clinicube.co](http://www.clinicube.co)